

## ETP50 - ELECTRIC TRANSFER PUMP

For pumping large volumes of water in sewer bypass, water transfer, bulk dewatering, or well-point dewatering applications.

Stormtec offers a variety of electric transfer pump applications to move large volumes of sewage, liquids, and sludge up to 3 inches in diameter. Our electric transfer pumps are typically mounted on a skid, which can stand-alone or be used in combination with additional equipment.

### FEATURES

- Skids are constructed out of carbon steel epoxy coated with integral lifting lugs for easy transport.
- Fitted 230-volt control panel.
- Automatic float controls.
- Systems can stand alone or be used in combination with additional equipment.

### MATERIAL SPECIFICATIONS

MODEL	ETP50
MAX FLOW	1,975 GPM [125 L/s]
CONNECTIONS	6" x 6"
MAX HEAD	120 FT [6 m]
POWER	230V/60A 460V/11.8A
APPLICATION	Water Transfer, Bulk Dewatering, Sewer Bypass





VARIOUS PATENTS APPLY

# Priming Assisted Centrifugal Pump

## Model PA6C60C-B-E50 460/3 and PA6C60C-B-E50 575/3

### Size 6" x 6"



Total Head		Capacity of Pump in U.S. Gallons per Minute (GPM) at Continuous Performance		
P.S.I.	Feet			
46.8	108	440	440	440
43.4	100	840	840	840
39.0	90	1020	1140	1140
34.7	80	1100	1390	1390
30.3	70	1130	1510	1600
26.0	60	1135	1525	1750
21.7	50	1140	1535	1800
17.4	40	1140	1530	1800
13.0	30	1140	1530	1800
8.7	20	1140	1535	1800
<b>Suction Lift</b>		<b>25'</b>	<b>20'</b>	<b>15'</b>



#### PUMP SPECIFICATIONS

**Size:** 6" x 6" (152 mm x 152 mm) Flanged.

**Casing:** Ductile Iron 65-45-12.

Maximum Operating Pressure 78 psi (538 kPa).\*

**Semi-Open Type, Two Vane Impeller:** Ductile Iron 65-45-12.

Handles 3" (76,2 mm) Diameter Spherical Solids.

**Suction Cover:** Gray Iron 30.

**Impeller Shaft:** Stainless Steel 17-4 PH.

**Replaceable Wear Plate:** Ductile Iron 80-60-03.

**Removable Cleanout Cover Plate:** Carbon Steel 1015.

**Seal Plate:** Gray Iron 30.

**Seal:** Mechanical, Oil-Lubricated. Silicon Carbide Rotating Face. Silicon Carbide Stationary Seat. Fluorocarbon Elastomers (DuPont Viton® or Equivalent). Stainless Steel 18-8 Cage and Spring. Maximum Temperature of Liquid Pumped, 160°F (71°C).\*

**Shaft Sleeve:** Stainless Steel 17-4 PH.

**Priming Chamber:** Gray Iron 30 Housing w/Stainless Steel Float and Linkage.

**Discharge Check Valve:** Ductile Iron Housing w/Buna-N Flapper.

**Radial/Thrust Bearings:** Open Double Ball.

**Bearing and Seal Cavity Lubrication:** SAE 30 Non-Detergent Oil.

**Gaskets:** Resistant Synthetic Rubber, Vegetable Fiber and Buna-N.

**O-Rings:** Buna-N.

**Hardware:** Standard Plated Steel.

**Bearing and Seal Cavity Oil Level Sight Gauges.**

\*Consult Factory for Applications Exceeding Maximum Pressure and/or Temperature Indicated.

**Standard Equipment:** Hoisting Bail. Belt Driven Air Compressor. Skid Base. Strainer. Control Box.

**Optional Equipment:** NPT Suction/Discharge Flanges. NPT Threaded Flange Kit. [Single Ball Type Float Switch](#).\*\* EPS w/Submersible Transducer Liquid Level Sensor (50 Ft [15 M] Cable Standard, Alternate Lengths Available).

\*\*50 Ft. (15 m) Standard Length; Dual Switches and Alternate Cable Lengths Available From the Factory.



#### MOTOR SPECIFICATIONS ‡

**Type:** Totally Enclosed Fan Cooled.

**Frame Size:** 326T.

**Power:** 50 H.P. (37,3 kW).

**Voltage/Phase:** 460/3 or 575/3.

**Hz:** 60.

**S.F. (460/3)** 1.15, **(575/3)** 1.25.

**Speed:** 1800 RPM Nominal.

**Full Load Amps:** **(460/3)** 56.9, **(575/3)** 48.5.

**Locked Rotor kVA Code:** **(460/3)** G, **(575/3)** H.

**Bearings:** Ball Type.

#### CONTROL SPECIFICATIONS

NEMA Type 3R Intrinsically Safe Rain and Sleet (Ice) Resistant Enclosure. Carbon Steel with ANSI 61 Powder Coat. Manual ON/OFF Control with Across-The-Line Starter. 3 Pole Instantaneous Trip 100 Amp Circuit Breaker Type HMCP.

‡ Standard Specifications Shown. Alternate Motors Available - Consult Factory.



GORMAN-RUPP PUMPS

www.grpumps.com

Specifications Subject to Change Without Notice

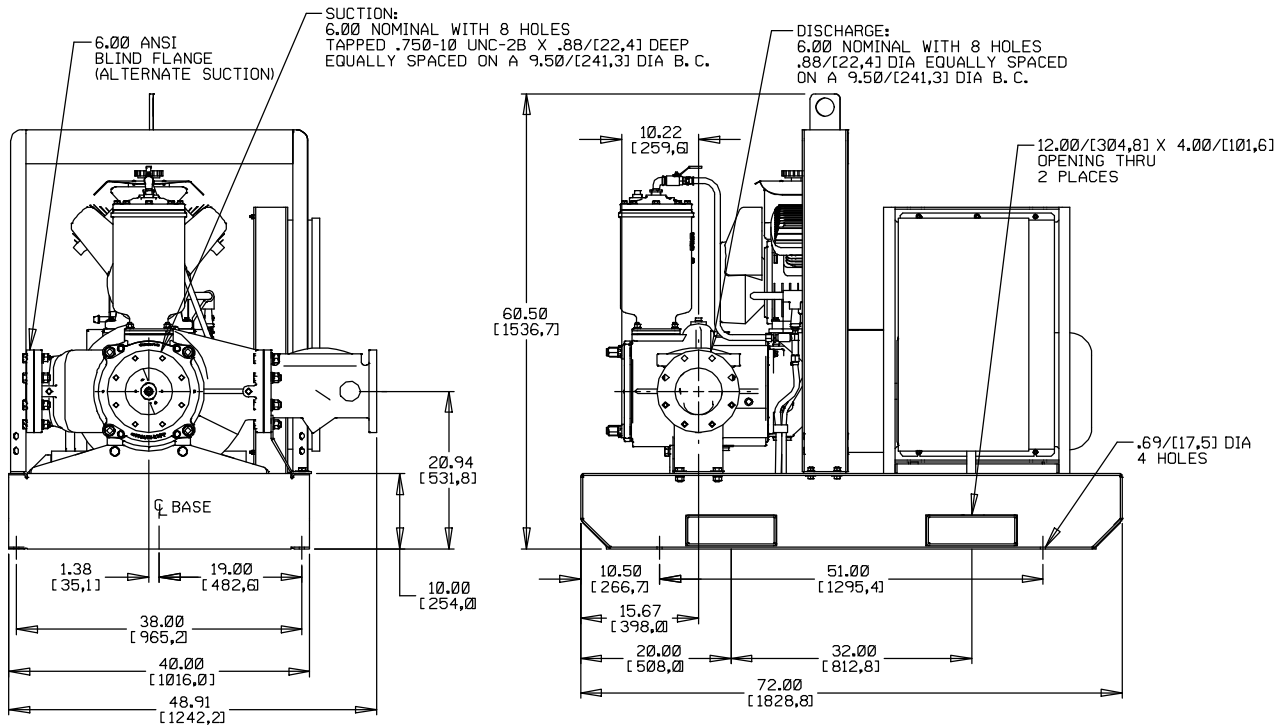
Printed in U.S.A.

**Specification Data**

SECTION 42, PAGE 610

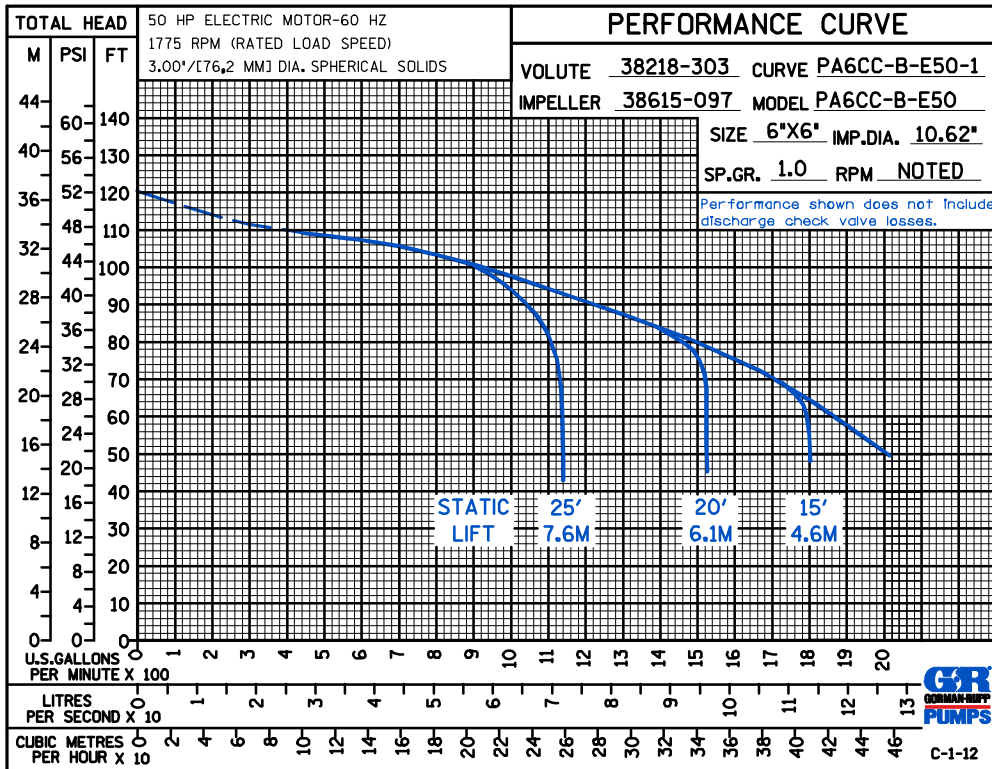
APPROXIMATE DIMENSIONS and WEIGHTS

**NET WEIGHT:** 2500 LBS. (1134 KG.)  
**SHIPPING WEIGHT:** 2700 LBS. (1225 KG.)  
**EXPORT CRATE SIZE:** 247 CU. FT. (7 CU. M.)



DIMENSIONS:  
 INCHES  
 (MILLIMETERS)

POWERED BY: 50 HP, 1800 RPM, 326T FRAME MOTOR



**GORMAN-RUPP PUMPS**

www.grpumps.com

Specifications Subject to Change Without Notice

Printed in U.S.A.